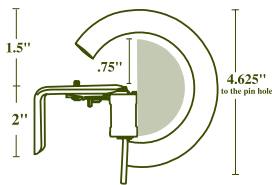
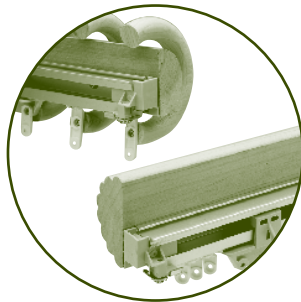




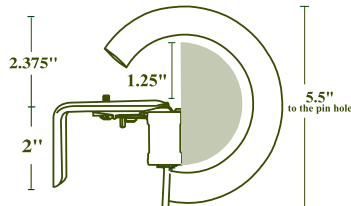
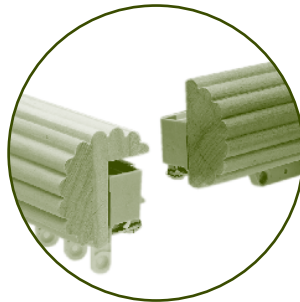
www.decorativewoodware.com

TRAVERSE REFERENCE CHART

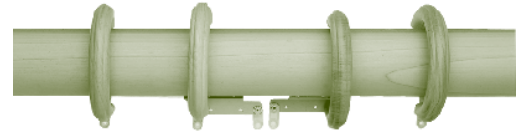
Choose from Smooth, Reeded, Deco Twist or Twist Fascia, in either routed or half round, fitted with our finest drapery hardware. For information on motorization call your account representative for details.



2 1/4" Traverse



3" Traverse



Smooth with Rings



Reeded Traverse



Twist Traverse



Deco Twist Traverse

Bottom edge of track will be slightly visible with twist rod sets.

- *Decorative rings and finials are not included and must be ordered separately.*
- *Assembled sets include approximately 3.5 slides per foot, standard projection installation brackets, and tension pulley.*
- *Heavy duty track is available, however, decorative rings cannot be used with heavy duty track.*
 - *3 1/2" Return, Fixed Projection Bracket (#94122) is standard.*
 - *3 1/2" – 4 1/2" Adjustable Projection Bracket (#94129) is available upon request.*
- *6" Adjustable Projection Bracket (#94125) may be ordered separately for additional charges.*
- *Maximum fabric weight for 16' set:*
 - *32 lbs. for Standard Track*
 - *62 lbs. for Heavy Duty Track*
- *Mitered returns are available for a surcharge. Specify track length. (Not available for Deco Twist)*
- *Custom splicing is available for a surcharge.*
 - Maximum size, without a splice:*
 - *2 1/4" and 3" Smooth & Reeded poles and fascia – 16 feet*
 - *2 1/4" and 3" Twist & Deco Twist poles and fascia – 12 feet*
- *Double Mount Traverse Rod Sets are available. The wood fascia is attached to the front track only. Double Mount Brackets are included.*

For Standard Rod Sets

Specify the Following When Ordering:

- | | |
|---|--|
| <input type="checkbox"/> Quantity | <input type="checkbox"/> Cord placement and drop (standard 8') |
| <input type="checkbox"/> Fascia style | <input type="checkbox"/> Return, if other than 3 1/2" – Additional charges may apply |
| <input type="checkbox"/> Track length | <input type="checkbox"/> When ordering decorative wood traverse rings specify quantity |
| <input type="checkbox"/> Finish name and number | <input type="checkbox"/> Specify finial design and finish |
| <input type="checkbox"/> Draw (right, left or center) | |